

**METRO**<sup>®</sup>  
INDUCTION SYSTEM

**GOLD MINE**<sup>®</sup>

Committed To Excellence In Developing High-end Technological Systems

www.metro-rajkot.com



Incredible  
Design



An ISO 9001  
Company







METRO ELECTRIC COMPANY the pioneer's in Indian Precious metals sector have developed this optimal induction system for highest performance of high capacity melting for the refiners and bulk jewellery manufacturers. It runs on induction Technology, Absolute homogeneous alloying with reduction in burning losses is achieved due to uniform temperature controlling; with highest safety standards for the operator as well as the Induction systems and option of immersion thermocouple or optical pyrometer for precise temperature controlling.

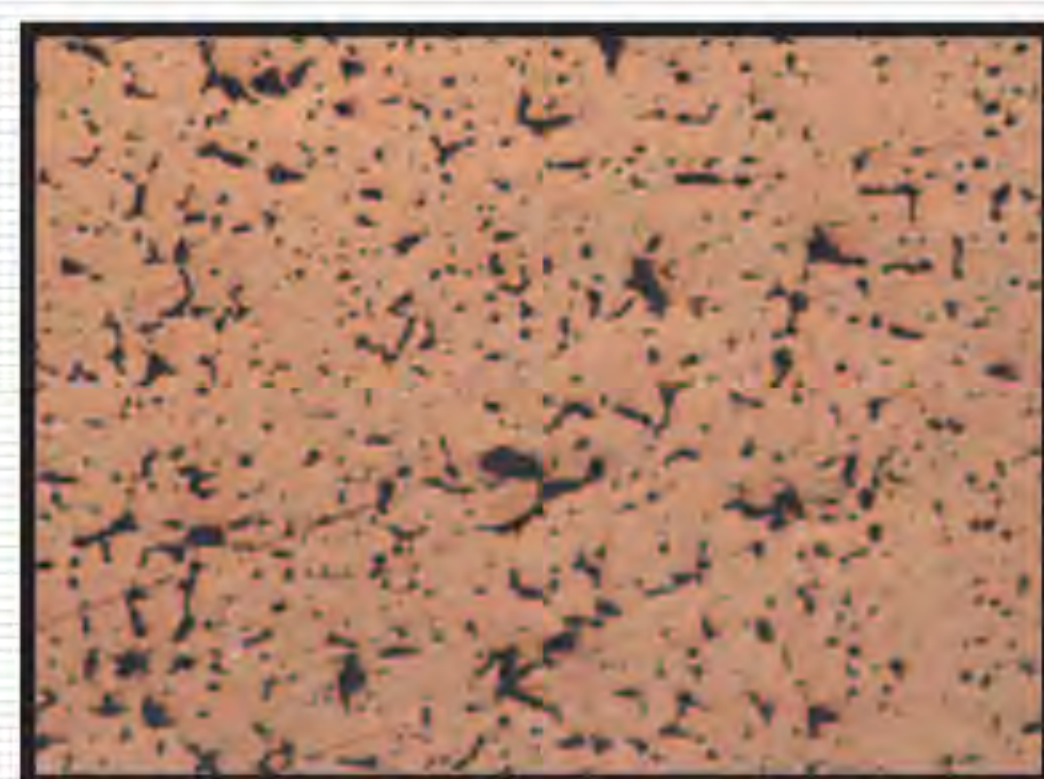
Advantage of melting bulk quantities at automatic appropriate energy consumption, is an added advantage with host of safety features, small in size and low on budget is all you need for fast and economical melting with assurance of timely services.

The GOLD MINE range of product is available in melting capacity variants of 10Kg, 20g and 30Kg to suite your needs of medium to large melting batches and simplicity of better melting. All this systems have capacity to work in auto as well as manual mode for the convenience of melting and temperature controlling, with standard fault tracking and rectification system to reduce down times to negligible and an added facility for automatic tilting system.

#### MICRO STRUCTURE OF GOLD 700x Zoom



Gold melted with conventional method.



Gold melted with induction method.

#### TECHNICAL DATA

Model	G1
Power Supply	3Ø
Voltage	415V 50Hz/60Hz
Absorbed Power	12 KVa
Capacity of Crucible*	10 Kg 24Kt (Au) <sup>+</sup>
Maximum temperature	1200°C
Melting time	12 min. <sup>++</sup>
Temperature measurement	K - Type
Water re-cooling system	Standard Equipment
Cooling water temperature	20°C - 30°C
Water Pressure	3.5 Bar
Maximum water Flow	10 ltr/min
Weight (With Chilling Unit)	403 Kg
<b>Dimensions (mm) L X B X H</b>	
Induction Generator	1210 x 860 x 1090
Chilling Unit	560 x 790 x 850

+ Brimfull capacity \* High Density Graphite Crucible  
++ Under standard condition

#### HIGHLIGHTS :

- Manual or automatic tilting facility
- Minimum maintenance
- Almost zero shutdown time
- Fully automatic control; easy troubleshooting
- Heat and power loss reduced
- All safety precautions provided
- Feather touch controls
- Automatic power regulation
- Perfect homogeneous melting at low costs
- Optional immersion thermocouple or optical pyrometer

#### BENEFITS :

- 80% Income tax depreciable
- Increased Productivity
- Safe & Convenient Layout
- No waste products
- No products of combustion
- Economical and efficient in operation
- Easy to Operation
- Energy saving - Flameless furnace
- Continuous operation as chilling unit is standard

Note :1. Always use genuine parts and graded crucibles from the company for efficient, effective capacity utilization.

2. As continuous improvements are contemplated, the Product illustrations, Technical Data & Description are not binding & may be changed without prior notice.



## METRO ELECTRIC COMPANY

32/1, Sakhiyanagar, B/h. S.T. Work Shop, Gondal Road, Rajkot-360 004 (Guj. India)  
Tel. : +91 281 2360610 / 12, Fax : 2360611 • Url : [www.metro-rajkot.com](http://www.metro-rajkot.com) • E-Mail : [Info@metro-rajkot.com](mailto:Info@metro-rajkot.com)

Imprint : All Logos, Brand Name, Product Designs and Trade Marks used are registered trade marks of Metro Electric Company and or their respective owners and should not be used without prior written permission. The machines depicted here may include some options available at additional charge.



An ISO 9001  
Company

w.e.f. 7-2015 r3

